

770 2/6

**FLOOD VIEWS**  
OF  
**HUNTINGTON, W. VA.**



Copyright 1913 by  
**EMMEL & HOWARD, Chillicothe, Ohio**

Gus Thompson

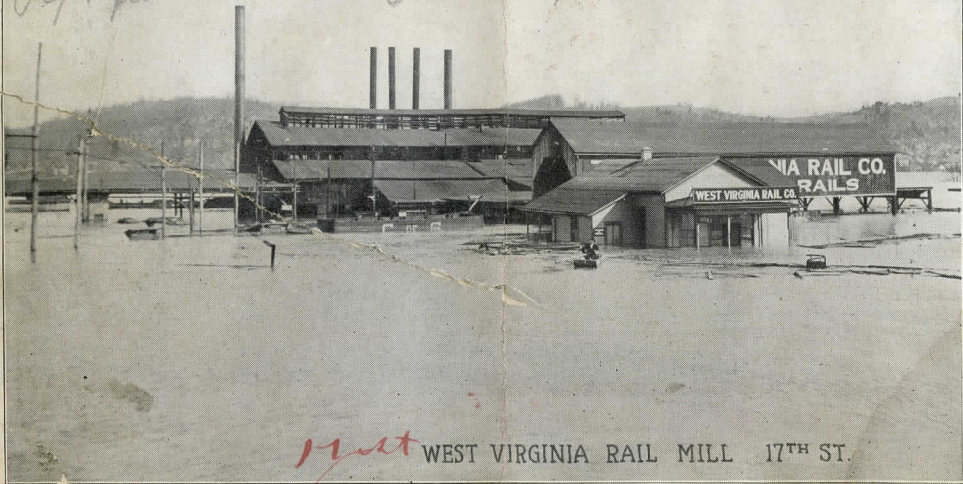


4<sup>TH</sup> AVE. & 11<sup>TH</sup> ST.

*11* MASONIC TEMPLE UNDER CONSTRUCTION

*Sept 1914*

*Gus Thompson*



*West* WEST VIRGINIA RAIL MILL 17<sup>TH</sup> ST.





4th 9th St from 4th Ave.



10 ST FREDERICK HOTEL.



4<sup>TH</sup> AVE.

West





*11<sup>th</sup>* at 3<sup>rd</sup> AVE. between 10<sup>th</sup> and 11<sup>th</sup>





10<sup>TH</sup> ST. from 5<sup>TH</sup> AVE.



MARSHALL COLLEGE 16<sup>TH</sup> & 3<sup>RD</sup>



*2nd* 8<sup>TH</sup> & 4<sup>TH</sup> TOWARD 9<sup>TH</sup>





*2 out*

20<sup>TH</sup> ST & THIRD AVE.



10 St Looking down 9<sup>TH</sup> ST. from 4<sup>TH</sup> AVE.



9<sup>th</sup> 3<sup>rd</sup> AVE. EAST FROM 9<sup>th</sup>





18<sup>TH</sup> ST. from 16<sup>TH</sup> AVE.



5<sup>TH</sup> AVE. between 13<sup>TH</sup> and 14<sup>TH</sup> STS.



*I have* HAGER'S HOME, 14<sup>TH</sup> and 5<sup>TH</sup> AVE.





8<sup>TH</sup> & 4<sup>TH</sup> Looking Towards the River.



13<sup>TH</sup> & 5<sup>TH</sup>



4<sup>TH</sup> AVE. looking WEST

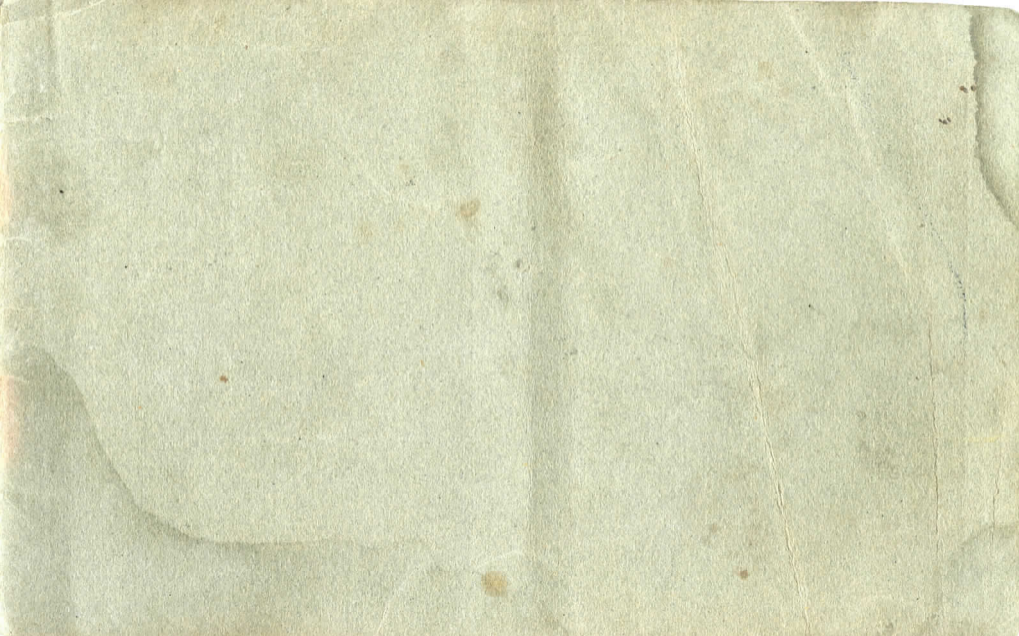




12<sup>TH</sup> ST. & 5<sup>TH</sup> AVE. WATER ABOUT 15 INCHES HIGHER



*20th* U.B. CHURCH, Cor. 4<sup>TH</sup> & 20<sup>TH</sup>





Mrs. Stanley Fillingim

PLACE ONE  
CENT STAMP  
HERE

—  
ADDRESS  
BELOW

Franklin Township

Box 100 C. L. Fillingim

6 1/2 x 2 1/2 in.

Price

Franklin Township

Stanley Fillingim

